



The Headache Institute & Adolescent Headache Center

INFORMATION ON THE HEADACHE INSTITUTE AND HOW TO APPLY FOR FELLOWSHIP

MISSION OF THE HEADACHE INSTITUTE AND ADOLESCENT HEADACHE CENTER

The Headache Institute at St. Luke's-Roosevelt Hospital Center was founded in 1998 to meet the needs of the very large but underserved headache population in America. Staffed by physicians who are board-certified in Neurology and completed fellowship training in Headache Medicine, the Headache Institute is uniquely specialized to offer care to headache sufferers regardless of etiology. Our physicians have diagnosed and successfully treated never-before-seen conditions and have set the standard for the identification and treatment of such ailments worldwide. We are pioneers and authors of cutting-edge research, dedicated to the treatment and cure of headache and facial pain. In 2009, we expanded our center to open the nation's first Adolescent Headache Center to provide targeted care to those aged 12-18 who are afflicted with headache.

ABOUT THE INSTITUTE

The Headache Institute and Adolescent Headache Center sees patients routinely by appointment from Monday to Friday, 9 AM to 5 PM. When necessary, patients may be brought in for acute treatments if their condition warrants emergency care, or they may be admitted to the hospital for longer term administration of intravenous medications.

ABOUT THE FELLOWSHIP

The Headache Institute offers a one year Headache Fellowship Program for neurologists who have completed their residency requirements. The Fellowship is accredited by the United Council for Neurologic Subspecialties. This advanced training will encompass all clinical and research aspects of headache. During your fellowship you will participate in the clinical assessment and management of patients with a wide variety of headache disorders, in a clinic, private practice, acute care, and inpatient setting. You also will have the opportunity to participate in clinical research. Elective time will be available to devote to an independent research project and to gain additional experience in such areas as neuro-ophthalmology. The Headache Fellowship Program at Roosevelt Hospital Center was established in 2000. To date, six fellows have completed training in this program. We anticipate training one fellow per year.

HOW TO APPLY FOR FELLOWSHIP

Complete the application on the last page of this document and return it our Fellowship Program Director, Dr. Joshua Cohen, by the deadline stated, either by mail or e-mail. Additional pages may be used, not to exceed three.



The Headache Institute & Adolescent Headache Center

The Staff of the Headache Institute and Adolescent Headache Center



Lawrence C. Newman, MD, FAAN, is Director of The Headache Institute and an attending neurologist at St. Luke's-Roosevelt Hospital Center, Beth Israel Medical Center, and Montefiore Medical Center.

He is a professor of clinical neurology at the Albert Einstein College of medicine and the former director of the Montefiore Headache Unit.

Board certified in headache and neurology, Dr. Newman is the first in the nation to have completed a formal fellowship in headache, and has trained several neurologists in the subspecialty of headache. He is a Fellow of the American Headache Society and the American Academy of Neurology.

He is a member of the National Headache Foundation, the International Headache Society, the American Academy of Neurology, the Headache Cooperative of New England, and the American Headache Society where he also serves on the Board of Directors and multiple committees. He currently serves as Treasurer for the American Headache Society Executive Board and Course Director of their annual meeting in Scottsdale.

Dr. Newman has lectured worldwide and has published extensively on the diagnosis and treatment of headache disorders. He has co-authored numerous books, including *Migraine: Beating the Odds* and *What Do I Do Now?: Headache and Facial Pain*.

He has been listed in Best Doctors in America since 1997.

He also serves as a reviewer for several neurology and headache journals



The Headache Institute & Adolescent Headache Center



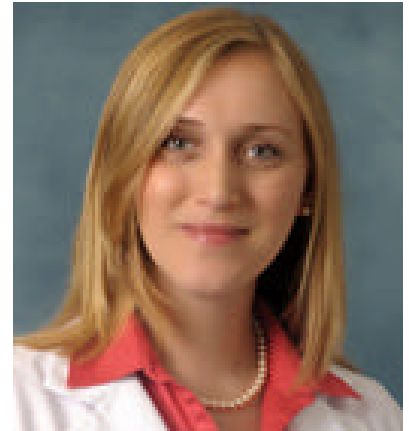
Joshua M. Cohen, MD, MPH is Director of the Headache Fellowship Program, an attending neurologist at St. Luke's-Roosevelt Hospital Center, and an assistant professor of neurology at Columbia University. He is board certified in neurology and board eligible in Headache Medicine.

He is a member of the National Headache Foundation, the International Headache Society, the American Medical Association, the American Academy of Neurology, and the American Headache Society where he also serves on the New Investigators and Trainees Section and Pediatric-Adolescent Section. He is also a member of the Medical Society of the State of New York where he serves on the Health Care Disparities committee and the New York County Medical Society where he serves as Secretary. He is also a member of the American Academy of Neurology's Delegation to the American Medical Association.

He completed his headache fellowship at The Headache Institute and a mini-fellowship in pediatric headache at Cincinnati Children's Hospital. He received the American Headache Society (AHS)/Merck US Human Health Scholarship Award in 2008 for research performed during his fellowship. He serves as co-chair of the Trevor Project NextGen. He is also the founder of Adolescents in Medicine at New York University.

Dr. Cohen has published original research and book chapters on the headache disorders. He also serves as a frequent reviewer for the journal *Headache*.

His interests are in the diagnosis and treatment of headaches in adolescents and adults, and in vestibular migraine.



Juline Bryson, MD, is an attending neurologist at St. Luke's-Roosevelt Hospital Center. She is board certified in neurology and board eligible in Headache Medicine.

She is a member of the National Headache Foundation, the International Headache Society, the American Academy of Neurology, and the American Headache Society. She completed her headache fellowship at Montefiore Headache Center and received the Headache Specialty Fellowship Award in 2007.

Dr. Bryson has a special interest in headache and fibromyalgia and has published on this subject. She is skilled in trigger point injections, nerve blocks, and onabotulinumtoxinA protocols (Botox®) for migraine and associated pain disorders.



The Headache Institute & Adolescent Headache Center

The Headache Institute and Adolescent Headache Center 2013-2014 Fellowship Application Guidelines

Instructions for Applicant

Criteria for selection are based on:

1. Demonstrated interest in pursuing a career in Headache Medicine
2. Understanding of headache fundamentals and competency in providing neurologic care
3. Strong support from mentors or advisors who have worked with applicant

Selection will be based on (see details below):

1. Statement of interest
2. Letters of reference
3. Curriculum Vitae

Applicants must submit one copy of the application and all supporting materials with the information as listed below:

1. Statement of interest which describes an interest in Headache Medicine, research goals, previous work in the field, and any other relevant information
 2. Complete personal data form (see following page)
 3. Two letters of reference from supervisors who can speak firsthand about your clinical work
 4. A current CV (include a history of prior research experience and a list of publications and awards).
-

The deadline for submission is 5:00 PM Eastern on March 1, 2012.

Materials will be reviewed by the Fellowship Program Director and interviews will subsequently be granted to strong applicants.

Please forward the completed application with all supporting materials to:

Joshua M. Cohen, MD, MPH – Fellowship Program Director
The Headache Institute and Adolescent Headache Center
425 W. 59th Street, Suite 4A
New York, NY 10019
(212) 523-5869
joscohen@chpnet.org
